



Empowering Ethnic Diversity

In the current system, the first stage small-state sample (namely Iowa and New Hampshire) is already grossly unrepresentative of the U.S. electorate... disproportionately white, rural, and middle. In contrast, consider as a group the 38 jurisdictions that would be eligible for the first round. The first round eligibility pool has a population of 88.5 million people, or 31.5% of the total population. Clearly, this is a far more representative pool from which to select the first states.

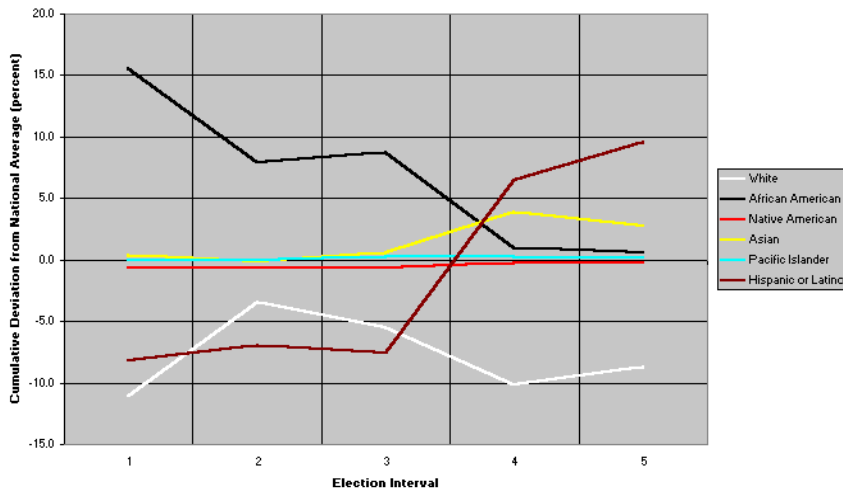
Twenty random simulations of the American Plan were analyzed for the distribution of ethnic groups in the early rounds in each simulation to see how much the random selection might favor these groups. The results from three of the 20 simulations are shown below.

Ethnic Demographics of Iowa and New Hampshire

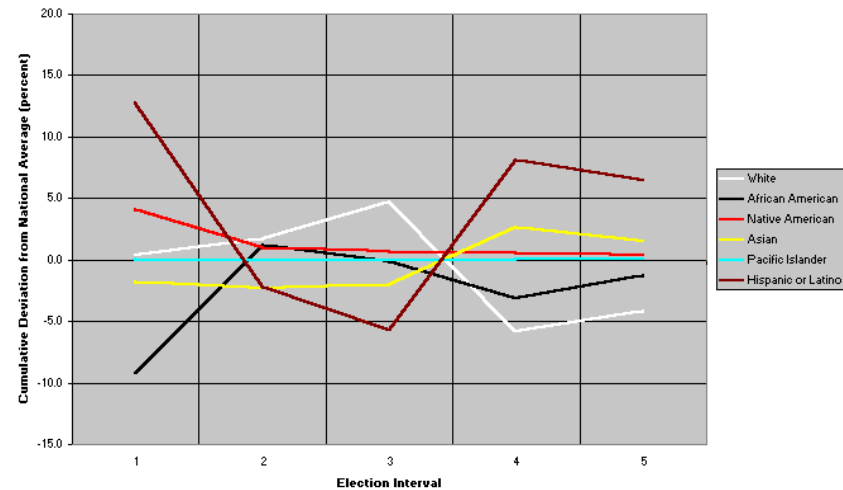
State	Black or African American	Asian	Hispanic or Latino (of any race)
Iowa	2.1	1.3	2.8
New Hampshire	0.7	1.3	1.7
US	12.3	3.6	12.5

(U.S. Census Bureau 2002)

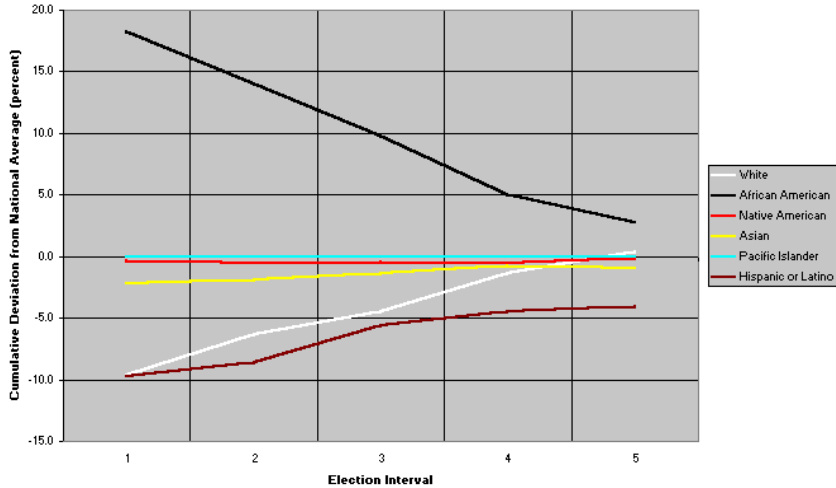
Anomalous Ethnic Distributions
Mod 2 Sample Schedule 4



Anomalous Ethnic Distributions
Mod 2 Sample Schedule 17



Anomalous Ethnic Distributions
Mod 2 Sample Schedule 18



Simulation 4 is a case where both an African American and a Hispanic could make strong showings because whites are substantially underrepresented throughout the first five rounds.

Simulation 17 is a schedule in which a Latino candidate could make a strong showing in Round 1, and if he or she could hang tough through Rounds 2 and 3, could come roaring back in Rounds 4 and 5.

In Simulation 18, African Americans are significantly overrepresented in the early rounds. Would Senator Barack Obama like to run for president in this primary schedule?

Certainly, there are other simulations where whites enjoyed an early advantage... but that happens every four years under the current system!

For more information, visit www.americanplan.org

Center for Voting and Democracy
6930 Carroll Ave., Suite 610, Takoma Park, MD 20912
Phone: (301) 270 4616, Fax: (301) 270-4133
Email: info@fairvote.org, Web: www.fairvote.org/

OPS-Alaska
2262 Magnolia Ave., Petaluma, CA 94952
Phone & Fax: (707) 773-1037, Cell: (707) 494-0666
Email: teg@ops-alaska.com, Web: www.ops-alaska.com